

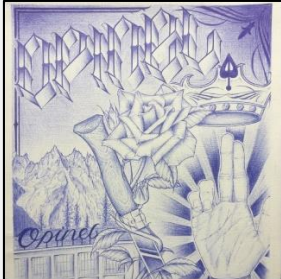
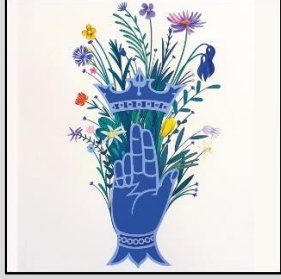



## Œuvres gagnantes

Nom d'artiste / pseudonyme	Tableau
Amandine	 A painting of a woman with dark hair styled in a bun, wearing a light blue sleeveless dress and white gloves. She is holding a lit cigarette in her right hand. The background is a simple interior with a window and curtains.
Workshop 1989	 A portrait painting of a man with a prominent mustache and a serious expression. He is wearing a dark suit jacket and a white shirt. The background is a textured, brownish-gold color.
Byrze	 A blue-toned illustration of a hand holding a lit cigarette. The hand is rendered in a stylized, almost geometric manner. The background features a landscape with mountains and a small structure. The word 'Opinel' is written in the bottom left corner.
Agathe Robinson	 A painting of a blue vase filled with a variety of colorful flowers, including purple, yellow, and red blooms. The vase has a decorative pattern at the bottom.
Jym	 A painting of a scorpion with a sword. The scorpion is rendered in a stylized, almost abstract manner, with a long, thin body and a sword-like tail. The background is black.

**Cheutin, J.-M.**



**Bécue, B.**



**Ger**



**Lux**



**Geffroy, D.**



**Le Lynx**



**Grange  
Sciocluna, C.**



**Gauzan, M.**



**Cécile Languille**



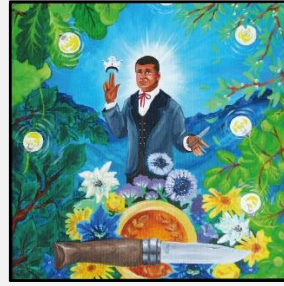
**Grillet, T.**



**Flog45**



**Clara Vialletelle**



**Longueova, J.**



**Garettaz, C.**



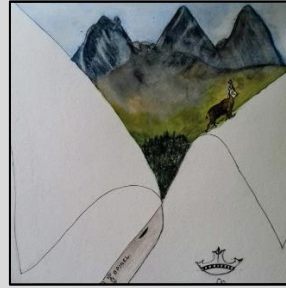
**T.M.**



**Fly Phantomaix**



**Girollet, C.**



**Bastard, H.**



**EVI**



**Les gagnants ont été contactés directement par mail.  
Le Musée Opinel remercie tous les participants.**